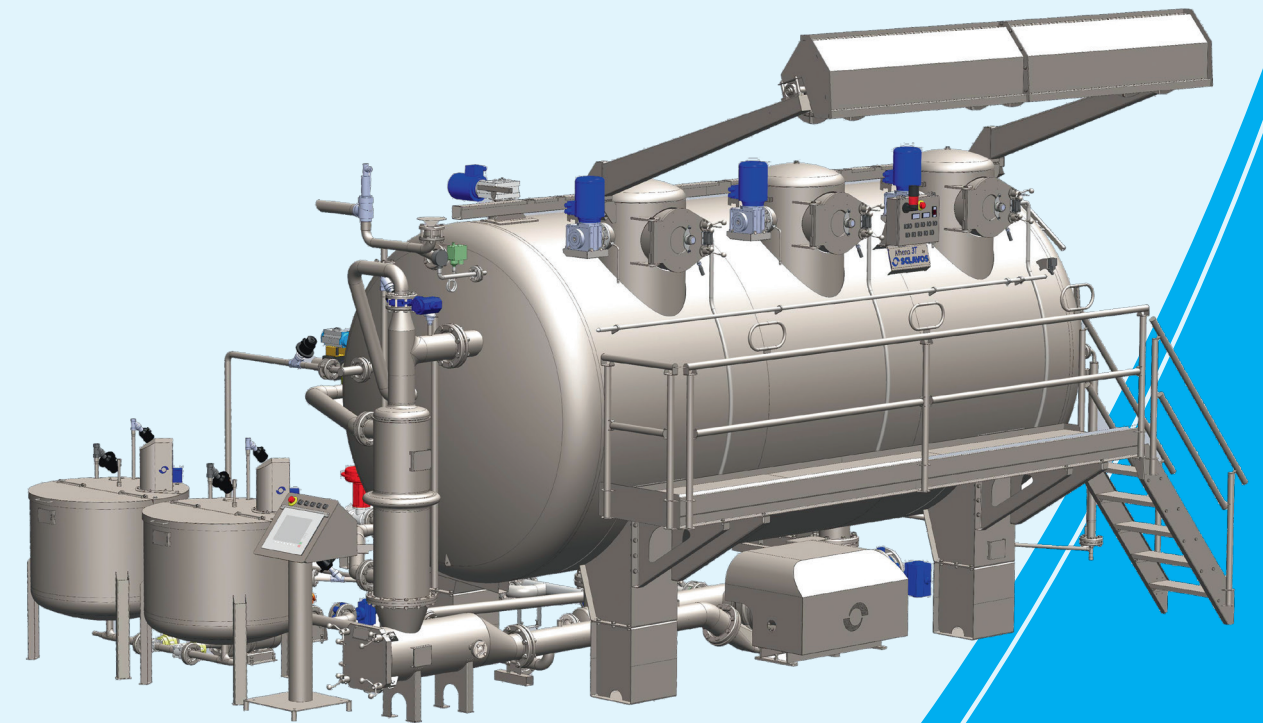


Machine SIZE	Fabric Capacity (Kgs)	DIMENSIONS (mm)					
		A	B	C	D	E	F
Athena3T 250H	250	3710	4300	1230	820	3330	4350
Athena3T 500H	500	5130	4300	1230	820	3380	4400
Athena3T 750H	750	6440	4660	1590	820	3380	4400
Athena3T 1000H	1000	8000	4740	1670	820	3530	4550
Athena3T 1250H	1250	9480	5240	2130	790	3530	4550
Athena3T 1500H	1500	10790	5520	2420	790	3530	4550

Machine SIZE	Fabric Capacity (Kgs)	DIMENSIONS (mm)					
		A	B	C	D	E	F
Athena3T 350H	350	3950	4300	1230	820	3330	4350
Athena3T 700H	700	5660	4300	1230	820	3380	4400
Athena3T 1050H	1050	7330	4890	1800	820	3380	4400
Athena3T 1400H	1400	9240	5140	2030	790	3530	4550
Athena3T 1750H	1750	10790	5520	2420	790	3530	4550
Athena3T 2100H	2100	12640	5520	2420	790	3530	4550



Athena3T

Heavy Fabric Dyeing Machine

www.sclavos.eu

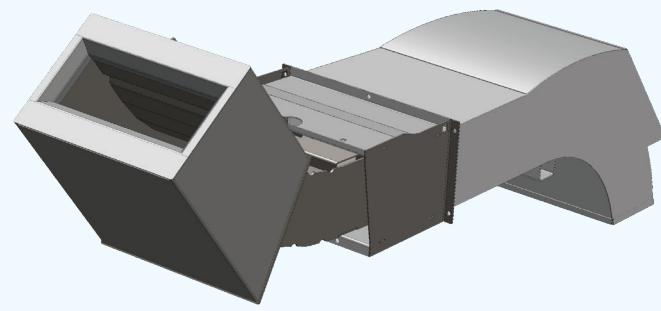
HEADQUARTERS
 5 AGHIOU PANTELEIMONOS St. GR., 12241 EGALIO, ATHENS
FACTORY - SERVICE CENTER
 320 09 SHIMATARI VIOTIAS - GREECE
 TEL.: +3022620 59788, +30210 3471079, FAX.: +3022620 59787

Athena3 T

Fabric Dyeing Machine

Athena3 T is the latest approach of SCLAVOS for dyeing heavy fabrics be it woven or knitted terry, blankets or other structures. Unique features of Athena3 T are addressing the special demands of treating such heavy and many times sensitive fabrics.

Main features of new Athena3 T are:



Extra Soft Flow system (ESFL)

ESFL is a special design of nozzle system for treating heavy gsm fabrics and especially terry fabrics. It ensures perfect dyeing and washing conditions in a very gentle environment of fabric treatment.

Elbow Plaiting System with Liquor By Pass (EPLB)

EPLB plaiting mechanism accompanied by liquor J-Box by-passing system ensures proper storage of the fabric.

Aquachron 3GA Continuous Washing System controlled by special software.

New generation of Aquachron system improves further the benefits of this revolutionary nonstop washing process. Special software adjusts and controls the process parameters for each batch.

Benefits: Optimum wet fastness achieved in shorter time, less water and energy consumptions comparing with conventional drop-fill-stock tank technology. Aquachron 3GA reduces drastically steam and chemicals consumption.

SCLAVOS designed and manufactured low energy consumption pumps.

Main pump is considered as heart of Fabric Dyeing Machine. Athena3 T is equipped with new series main pump, which has been designed and manufactured by SCLAVOS. Main advantage of new pump is high efficiency and lowest power consumption.

To Know Liquor Ratio System (TKLR)

TKLR is a unique SCLAVOS system measuring the Liquor Ratio during dyeing process precisely.

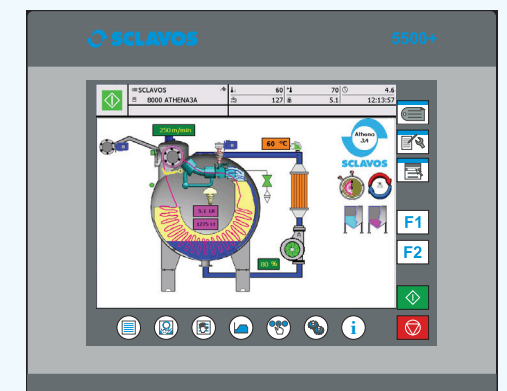
Accurate measurement of Liquor Ratio via TKLR offers a strong tool for meeting modern high demands of shade matching and repeatability especially on highly absorbance structures such as loops on towel fabrics.

Variable Loading System (VL)

VL enables Athena3 T to run batches from 100% loading down to 60% underload with same low Liquor Ratio. Result is repeatability, flexibility, accompanied by water and energy savings.

Operation by Automatic Adjustments.

According to each batch data, machine sets all the operation adjustments automatically. Thus, dyehouse supervisor is not involved in preparing any adjustments. As a result, machine is operating always at optimum conditions, ensuring full repeatability.



Versions of 250 and 350 kg per chamber.

Athena3 T is being offered in two versions such as 250 & 350 kg per chamber in order to create better scaling in batches preparation for more efficient production planning. Thus, the gaps between various machines' capacities are minimized, increasing flexibility of planning.